

**BCMA Antibody**  
**Catalog # ASC10131****Specification**

---

**BCMA Antibody - Product Information**

Application	WB, IHC-P, IF, E
Primary Accession	<a href="#">Q02223</a>
Other Accession	<a href="#">NP_001183</a> , <a href="#">23238192</a>
Reactivity	Human
Host	Rabbit
Clonality	Polyclonal
Isotype	IgG
Calculated MW	Predicted: 20 kDa

Application Notes	<b>Observed: 27 kDa KDa</b> BCMA antibody can be used for detection of BCMA by Western blot at 5 µg/mL. Antibody can also be used for immunohistochemistry starting at 10 µg/mL. For immunofluorescence start at 20 µg/mL.
-------------------	---

**BCMA Antibody - Additional Information**Gene ID **608****Other Names**

BCMA Antibody: BCM, BCMA, CD269, TNFRSF13A, BCM, Tumor necrosis factor receptor superfamily member 17, B-cell maturation protein, tumor necrosis factor receptor superfamily, member 17

**Target/Specificity**

TNFRSF17;

**Reconstitution & Storage**

Antibody can be stored at 4°C up to one year. Antibodies should not be exposed to prolonged high temperatures.

**Precautions**

BCMA Antibody is for research use only and not for use in diagnostic or therapeutic procedures.

**BCMA Antibody - Protein Information****Name** TNFRSF17**Synonyms** BCM, BCMA**Function**

Receptor for TNFSF13B/BlyS/BAFF and TNFSF13/APRIL. Promotes B-cell survival and plays a role in the regulation of humoral immunity. Activates NF-kappa-B and JNK.

**Cellular Location**

Cell membrane; Single-pass type III membrane protein. Endomembrane system; Single-pass type III membrane protein Note=Perinuclear Golgi-like structures

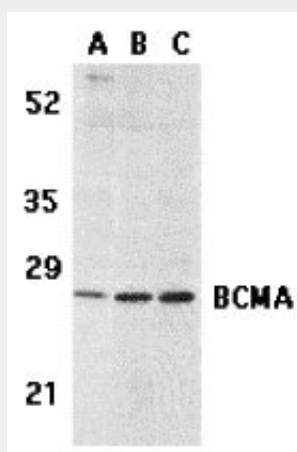
**Tissue Location**

Expressed in mature B-cells, but not in T-cells or monocytes

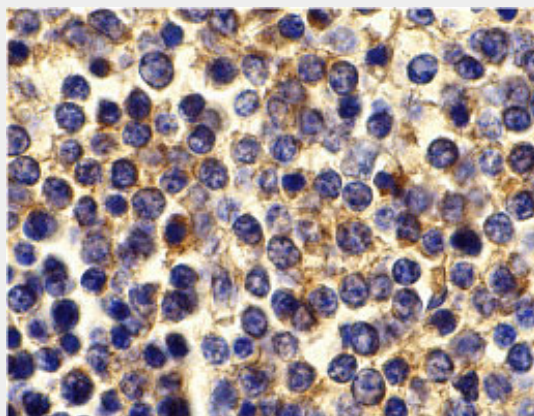
**BCMA Antibody - Protocols**

Provided below are standard protocols that you may find useful for product applications.

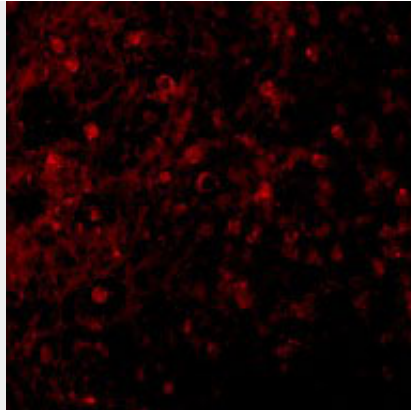
- [Western Blot](#)
- [Blocking Peptides](#)
- [Dot Blot](#)
- [Immunohistochemistry](#)
- [Immunofluorescence](#)
- [Immunoprecipitation](#)
- [Flow Cytometry](#)
- [Cell Culture](#)

**BCMA Antibody - Images**

Western blot analysis of BCMA in (A) human spleen tissue lysate, (B) K562, and (C) U937 cell lysates with BCMA antibody at 5 µg/mL.



Immunohistochemistry of BCMA in human spleen tissue with BCMA antibody at 10 µg/mL.



Immunofluorescence of BCMA in Human Spleen tissue with BCMA antibody at 10 µg/mL.

### **BCMA Antibody - Background**

BCMA Antibody: Members in the TNF superfamily regulate immune responses and induce apoptosis. Two novel members in the TNF family were recently identified and designated BAFF/BLyS/TALL-1/THANK/zTNF4 and April/TALL-2, respectively. BAFF was characterized as a B cell activator since it induced B cell proliferation and immunoglobulin secretion. April regulates immunological and non-immunological cell growth. Three receptors, BCMA (for B cell maturation protein), TACI, and BAFF-R, for BAFF were recently identified. BCMA, like TACI, binds BAFF and April. BAFF and its receptors induce B cell development and survival, activate NF- $\kappa$ B and c-jun N-terminal kinase, and are involved in B cell associated autoimmune diseases.

### **BCMA Antibody - References**

Moore PA, Belvedere O, Orr A, et al. BLyS: member of the tumor necrosis factor family and B lymphocyte stimulator. *Science* 1999; 285:260-3  
Schneider P, MacKay F, Steiner V, et al. BAFF, a novel ligand of the tumor necrosis factor family, stimulates B cell growth. *J. Exp. Med.* 1999; 189:1747-56  
Shu HB, Hu WH, Johnson H. TALL-1 is a novel member of the TNF family that is down-regulated by mitogens. *J. Leukoc. Biol.* 1999; 65:680-3  
Mukhopadhyay A, Ni J, Zhai Y, et al. Identification and characterization of a novel cytokine, THANK, a TNF homologue that activates apoptosis, nuclear factor- $\kappa$ B, and c-Jun NH2-terminal kinase. *J. Biol. Chem.* 1999; 274:15978-81